



# ECO-SAVE

SEAL SUPPORT SYSTEM

Create the optimal  
environment for  
your dual seal and  
our environment

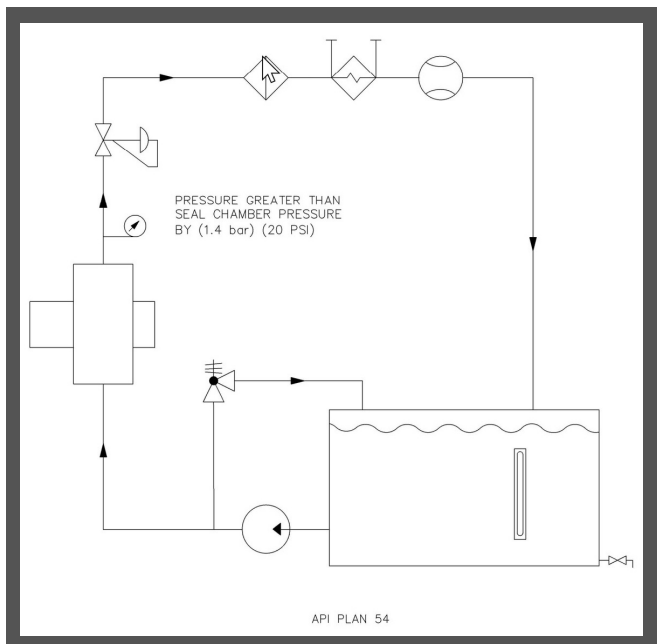


**MICHIGAN**  
35 Silverdome Industrial Park West  
Pontiac, MI 48342

**ALASKA**  
43784 Kenai Spur Highway  
Kenai, AK 99611

# Let ProSeal Service Group design the best Eco-Save Plan 54/55 to suit your needs

The API Plan 54/55 is the most reliable way to deliver cool, clean, stable Barrier Fluid to your dual/double seals.



## API Plan 54/55

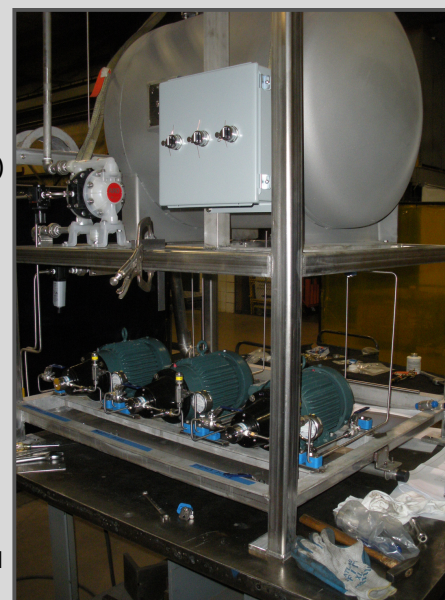
API PLAN 54	API PLAN 55
<p><b>BARRIER CIRCUIT:</b></p> <ul style="list-style-type: none"> <li>• Pressurized external barrier fluid system supplying clean barrier fluid to the double mechanical seal above the pump seal chamber pressure</li> <li>• &gt; Seal Chamber Pressure</li> <li>• 1.4 Bar / 20 PSI</li> </ul>	<p><b>BUFFER CIRCUIT:</b></p> <ul style="list-style-type: none"> <li>• Unpressurized external buffer fluid system supplying clean buffer fluid to the dual mechanical seal, less than pressure in pump seal chamber</li> <li>• &lt; Seal Chamber Pressure</li> <li>• Not to Exceed 40 PSI</li> </ul>
<p><b>USE IN SERVICES WHERE:</b></p> <ul style="list-style-type: none"> <li>• pumped fluid is hot</li> <li>• pumped fluid is contaminated with solids</li> <li>• internal flow inducer is unable to supply a sufficient flow rate</li> <li>• fluids that have hazardous vapors</li> </ul>	<p><b>USE IN SERVICES WHERE:</b></p> <ul style="list-style-type: none"> <li>• process fluid leakage to atmosphere should be minimized and contained</li> <li>• process may solidify in contact with atmosphere</li> <li>• additional heat removal from inner seal is required</li> </ul>

## Standard Eco-Save Unit 15 Gallon and 30 Gallon Stainless Steel Tank



Included on our Standard 15/30 Gallon  
API Plan 54/55:

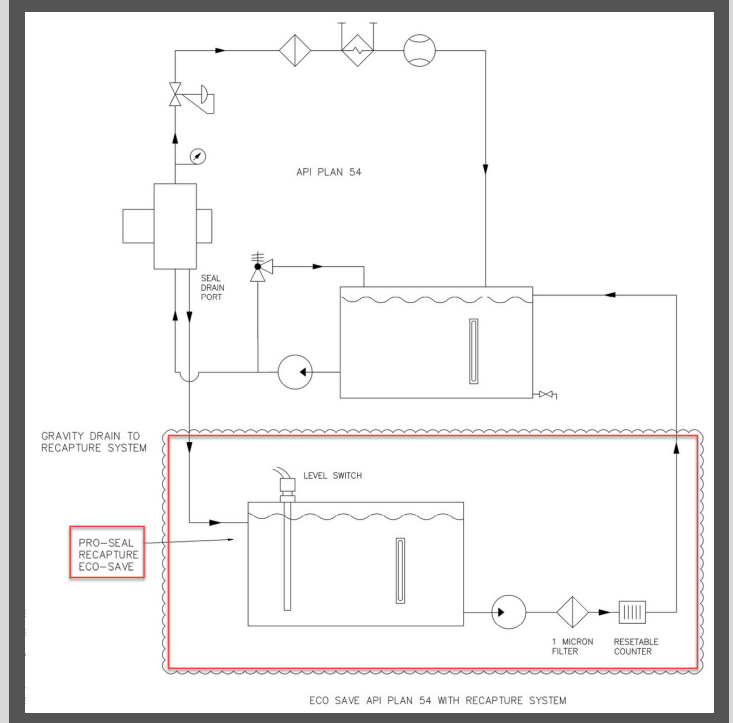
- Close Coupled Electric TEFC Motor (1HP)
- Positive displacement gear pump that delivers 1.5 GPM @ 1750 RPM
- Pump has integral (non-return) and adjustable (unloading valve)
- 150 Micron Suction Strainer with by-pass button
- Back pressure control valve
- Fluid level site glass with temperature gauge
- Filler/ breather cap
- Inspection clean out port and drain
- 15 or 30 gallon stainless steel sump
- Pressure gauges on output and return line.





# Preserve Your Valuable Barrier Fluid and Eliminate Waste with the ProSeal / Eco-Save Recapture System

Today's high pressure double seals are designed to allow leakage across the seal faces. **1.5 Gallons/Day is a very common leak rate.**



## Additional Benefits of the Eco-Save Recapture System:

- Extend service intervals at remote installations
- Improve housekeeping around pump
- Mitigate slip & fall potential around pump
- Eliminate waste
- Accurately determine leak rates with resettable counter

1.5 Gallons Leakage / Day x 365 Days = 547.5 Gallons / Year  
547.5 Gallons @ \$60 / Gallon =

**EST. \$32,805 SAVINGS PER YEAR**

*with the*  
**Eco-Save Recapture System**

# Options & Special Designs

Design Flexibility to Meet Customer-Specific Needs, Fast Design and Proposal Turn-Around, Short Lead Time or Standard Design Assembled from Stock

- **Filtration:** Single, Dual in Series, Dual in Parallel
- **Heat Exchangers:** Liquid to Liquid, Air to Liquid
- **Flow Meters:** Local, Instrumented
- **Level Indicators:** Visual on Tank, Instrumented
- **Press Switch**
- **Level Switch**
- **Class 1 Div 1 Motors**
- **Setups for Multiple Seals**
- **Pressures to 3600 PSI**
- **Pump Head Flow Rates:** to Match Your Specific Need

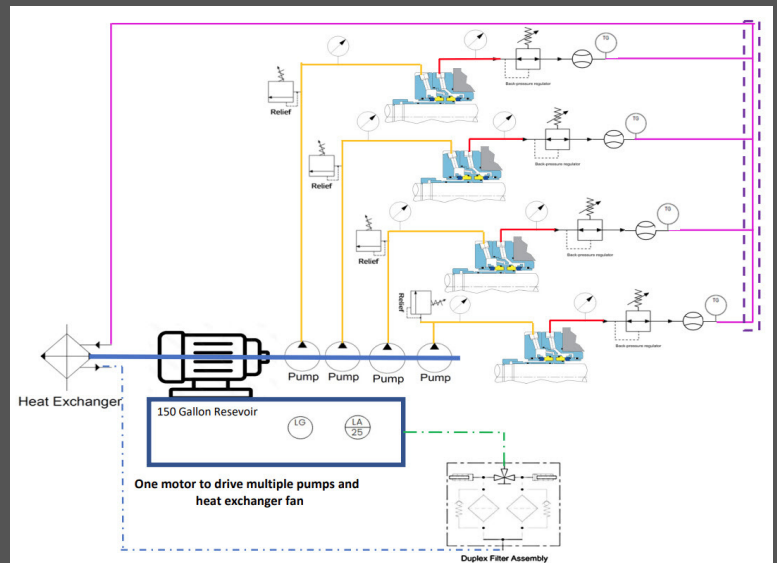


**ECO-SAVE**  
SEAL SUPPORT SYSTEM

Space saving condo system



Multi-Seal Designs From One Sump



Let ProSeal Service Group design  
the best Eco-Save Plan 54/55 to suit your needs